



4635847408

Order no. P463 0343 13 Part no. 463 584 74 08
Edition A 2023



G-Class

Mercedes-AMG Supplement

Mercedes-Benz



Publication details

Internet

Further information about Mercedes-Benz vehicles and about Mercedes-Benz AG can be found on the following websites:

<https://www.mbusa.com> (USA only)

<https://www.mercedes-benz.ca> (Canada only)

Documentation team

©Mercedes-Benz AG: Not to be reprinted, translated or otherwise reproduced, in whole or in part, without written permission from Mercedes-Benz AG.

Vehicle manufacturer

Mercedes-Benz AG

Mercedesstraße 120

70372 Stuttgart

Germany

As at 09.05.22

Thank you for purchasing a Mercedes-AMG

Before your first drive, please read this Operator's Manual carefully and familiarize yourself with your vehicle. For your own safety and a longer service life of the vehicle, follow the instructions and warning notices in this Operator's Manual. Disregarding them may lead to damage to the vehicle or injury to people.

Damage to the vehicle resulting from the disregard of the instructions is not covered by the Mercedes-Benz Limited warranty.

The standard equipment and product description of your vehicle may vary and depends on the following factors:

- Model
- Order
- National version
- Availability

Your vehicle may therefore differ from that shown in the descriptions and illustrations in individual cases.

Mercedes-AMG reserves the right to introduce changes in the following areas:

- Design
- Equipment
- Technical features

The following documents are integral parts of the vehicle:

- Digital operator's manual
- Printed Operator's Manual
- Maintenance Booklet
- Supplementary manuals relating to specific equipment
- Supplementary documents

Keep these documents in the vehicle at all times. Ensure that all documents are in the vehicle or passed on in the event of sale or rental.

Mercedes-Benz USA, LLC

Mercedes-Benz Canada, Inc.

A Mercedes-Benz Group AG Company

4635847408



Symbols 3

At a glance 4

Cockpit 4

General notes 7

Operator's Manual 7

Driving and parking 8

Driving 8

DYNAMIC SELECT switch 9

Automatic transmission 11

Driving and driving safety systems 12

Instrument display and on-board computer 17

Notes on the instrument display and on-board computer 17

Calling up displays in the Performance menu 17

Displaying and starting RACETIMER on the Performance menu 18

Maintenance and care 20

Notes on the care of tailpipes 20

Wheels and tires 21

Changing a wheel 21

Technical data 22

Operating fluids 22

Vehicle data 24

Trailer hitch 26

Display messages and warning/indicator lamps 28

Display messages 28

Warning and indicator lamps 28

Index 31

In this Operator's Manual, you will find the following symbols:

⚠ WARNING Danger due to failure to observe the warning notices

Warning notices draw your attention to hazards that may endanger your health or life, or the health or life of others.

▶ Observe the warning notices.

🌿 ENVIRONMENTAL NOTE Environmental damage due to failure to observe environmental notes

Environmental notes include information on environmentally responsible behavior or environmentally responsible disposal.

▶ Observe environmental notes.

! NOTE Damage to property due to failure to observe notes on material damage

Notes on material damage inform you of risks which may lead to your vehicle being damaged.

▶ Observe notes on material damage.

ⓘ These symbols indicate useful instructions or further information that could be helpful to you.

▶ Instruction

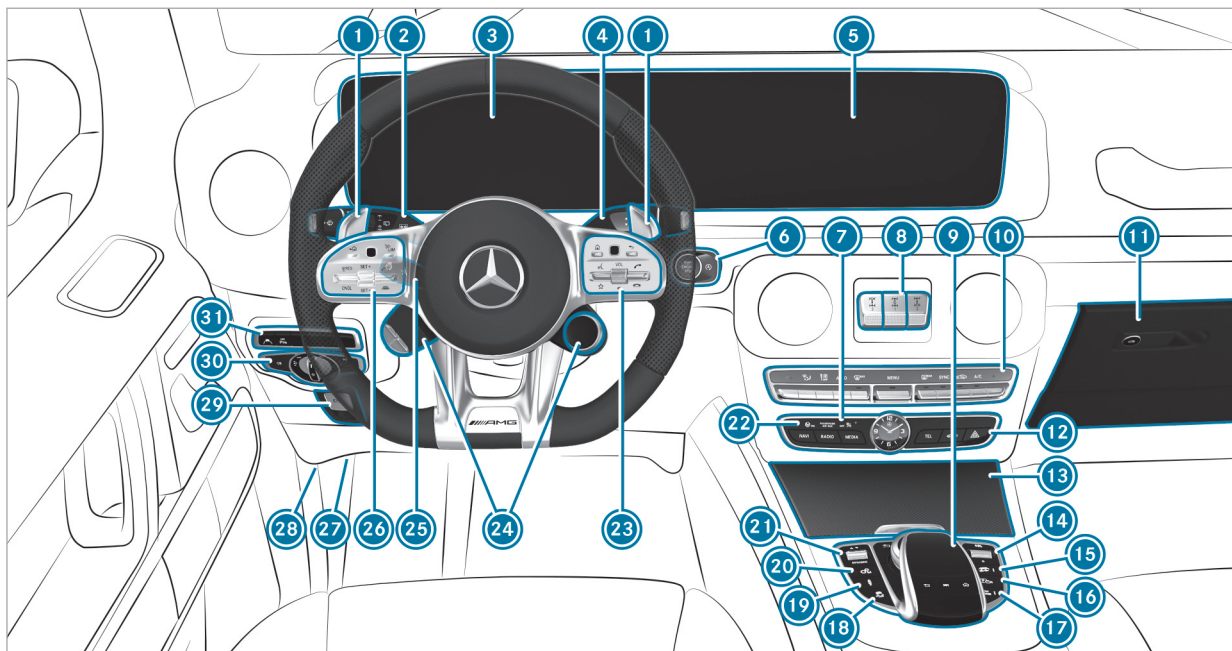
(→ page) Further information on a topic

Display Display field in the Instrument Display/media display

↗▶ Highest menu level, which is to be selected in the multimedia system

▶▶ Relevant submenus, which are to be selected in the multimedia system

* Indicates a cause



Left-hand drive vehicles

①	Steering wheel paddle shifters	→	11	⑮	AMG performance exhaust system	→	9
②	Combination switch			⑯	Active Parking Assist		
③	Instrument display	→	17	⑰	LOW RANGE off-road gear		
④	DIRECT SELECT lever			⑱	Activates/deactivates ESP®	→	12
⑤	Media display			⑲	AMG RIDE CONTROL	→	14
⑥	Start/stop button			⑳	Manual gearshifting	→	11
	ECO start/stop function			㉑	DYNAMIC SELECT switch	→	9
⑦	PASSENGER AIR BAG indicator lamp			㉒	Calls up the main functions of the multimedia system		
⑧	Activates/deactivates the differential locks			㉓	Control panel for the multimedia system		
⑨	Touchpad			㉔	AMG steering-wheel buttons	→	8
⑩	Climate control systems			㉕	Adjusts the steering wheel		
⑪	Glove box				Switches the steering wheel heater on/off		
⑫	Hazard warning light system			㉖	Control panel:		
⑬	Stowage compartment				On-board computer	→	17
⑭	Controller for volume and switching sound on/off				Cruise control		
	Switches the multimedia system on/off				Active Distance Assist DISTRONIC		

6 At a glance – Cockpit

27 Diagnostics connection

28 Opens the hood

29 Electric parking brake

30 Light switch

31 Switch panel for:

Active Lane Keeping Assist

Parking Assist PARKTRONIC

Operator's Manual

These Operating Instructions provide information on all the important functions of your AMG vehicle that are either not described or differ from the descriptions in the Operator's Manual. This information supplements or replaces the corresponding sections in the vehicle Operator's Manual. Under no circumstances do the Operating Instructions replace the printed vehicle Operator's Manual and the Digital Operator's Manual in the vehicle.

This Supplement and the Digital Operator's Manual in the vehicle describe the following models, standard and special equipment of your vehicle:

- Models, standard and special equipment available at the time of going to press with these Operating Instructions.
- The models and the standard and special equipment only available in certain countries.
- The models and the standard and special equipment, which will only be available at a later date.

Note that your vehicle may not be installed with all features described. This is also the case for systems relevant to safety. Therefore, the equipment on your vehicle may differ from that in the descriptions and illustrations.

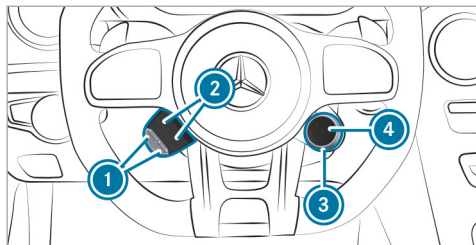
The original purchase agreement for your vehicle contains a list of the equipment in your vehicle at the time of delivery.

Should you have any questions concerning equipment and operation, please consult an authorized Mercedes-Benz Center.

The Operator's Manual, Operating Instructions, further supplementary documents and Maintenance Booklet are important documents and should be kept in the vehicle.

Driving

Function of the AMG steering-wheel buttons







The AMG steering-wheel buttons are two additional control elements on the steering wheel.

You can assign two vehicle functions of your choice to the left control element. You can change between the available functions by pressing display buttons ② repeatedly. The function currently selected is shown in display buttons ②.


The following functions are available:

-  ESP® (→ page 12)
-  AMG RIDE CONTROL (→ page 14)

-  AMG Performance exhaust system (→ page 9)
-  Manual gearshifting (→ page 11)
-  AMG DYNAMICS (→ page 9)
-  ECO start/stop function (see the vehicle Operator's Manual)

If you have assigned a function to one of display buttons ②, you can operate this function with corresponding button ①.

The assignment of display buttons ② remains stored even after a new engine start, but the operating status of the respective function is reset to the basic setting.

You can change between the drive programs with rotary switch ③. The selected drive program appears in display button ④. By pressing display button ④, you can directly access the drive program  (→ page 9).

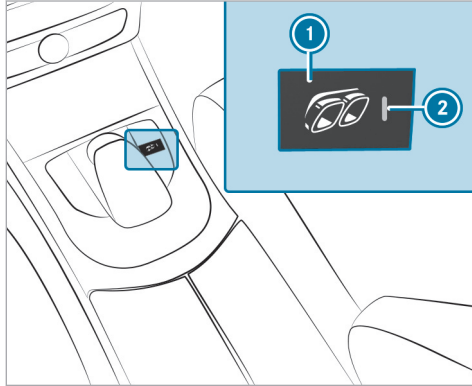
AMG Performance exhaust system

Function of the AMG Performance exhaust system

You can choose between the following sound characteristics for the AMG Performance exhaust system:

- **Balanced:** Comfortable sound characteristic
- **Powerful:** Sporty sound characteristic

Operating the AMG Performance exhaust system



- ▶ Press the **1** button.
The sporty characteristic (powerful) is selected when the **2** indicator lamp lights up.

Information on the AMG high performance brake system

The AMG high performance brake system is designed for heavy loads. This may lead to noise when braking. This effect can also occur after washing the vehicle.

The noise depends on the following factors:

- Speed
 - Brake force
 - Environmental conditions, e.g. temperature and air humidity
- i** Have the brake system checked at a qualified specialist workshop after it has been subjected to extreme loads.

DYNAMIC SELECT switch

Function of the DYNAMIC SELECT switch (Mercedes-AMG vehicles)

Function of the on-road drive programs


Use the DYNAMIC SELECT switch to change between the following drive programs:

- S** (**Slippery**): optimizes pulling away and driving characteristics in wintry and slippery road conditions
- I** (**Individual**): individual setting of drive, suspension, steering and ECO start/stop function
- C** (**Comfort**): comfortable and economical driving by shifting up early and the ECO start/stop function
- S** (**Sport**): sporty driving, optimizes switch points and more direct handling
- S+** (**Sport +**): especially sporty driving, acoustic signal when shifting down, optimal switching times and quicker pulling away




Drive program **C** is recommended in city traffic and stop-and-go traffic.

- ① Drive program **[C]** is always automatically active after the engine is restarted.

Function of the off-road programs

If the differential locks for the transfer case are engaged, the vehicle changes automatically to drive program  (**Trail**).

Use the DYNAMIC SELECT switch to change between the following drive programs:

-  (**Sand**): tight suspension and steering setting, optimized for driving on sand
-  (**Trail**): comfortable suspension and steering setting, optimized for driving on unpaved roads and loose ground
-  (**Rock**): tight suspension tuning and comfortable steering setting, optimized for driving in difficult off-road terrain and on hard, rocky ground

- ① You can switch between the drive programs only in the order given above. You cannot switch directly between **Sand** and **Rock**.

Disengage all differential locks to return to the on-road drive programs.

- ① See the vehicle Operator's Manual for further information on the function and operation of the differential locks.





Depending on the drive program selected, the following vehicle characteristics will change:

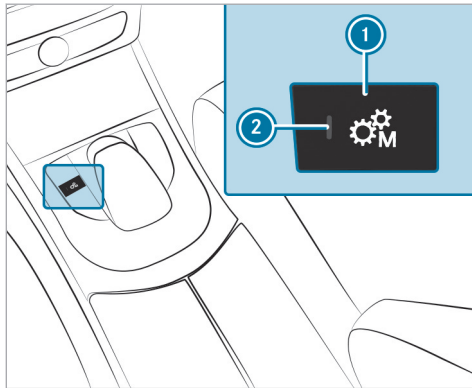
- Drive (engine management)
- Transmission management
- ESP®
- Suspension
- Position of the exhaust gas flaps
- Steering
- Availability of the ECO start/stop function
- Driver assistance systems
- Availability of Glide mode
- ① You can also change the following vehicle characteristics using the buttons on the center console:
 - Position of the exhaust gas flaps
 - ECO start/stop function
 - ESP®
 - Suspension

- Manual gear shifting

Configuring drive program I

Multimedia system:

-  Vehicle  DYNAMIC SELECT
-  Individual
-  Select the individual setting.

Automatic transmission**Manual shifting (Mercedes-AMG vehicles)**

- ▶ **To activate/deactivate:** press button ①. If indicator lamp ② is lit, manual shifting is activated. The current gear will be shown on the instrument display.

① To permanently shift the gears manually in drive program  using the steering wheel

paddle shifters, select the **M** (Manual) setting for the transmission.

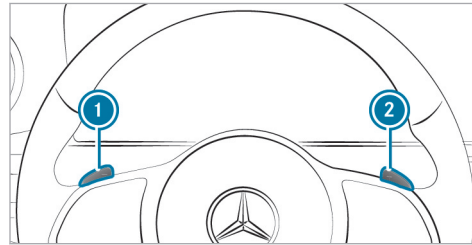
Shifting up and down

! **NOTE** Damage to the engine due to shifting up too late

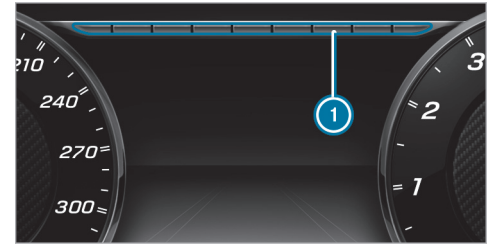
The automatic transmission does not shift up in manual mode even when the engine's limiting speed is reached.

The fuel supply is interrupted in order to prevent the engine from overrevving.

- ▶ Shift up before the engine speed reaches the red area in the tachometer.



- ▶ **To shift up:** pull steering wheel paddle shifter ②.
- ▶ **To shift down:** pull steering wheel paddle shifter ①.




If the engine speed is too high or too low, you will not be able to change gear using the steering wheel paddle shifters. In this case, segments ① will light up red.


Function of glide mode (Mercedes-AMG vehicles)

With an anticipatory driving style, Glide mode helps you to reduce fuel consumption.

Glide mode is characterised by the following:

- The combustion engine is disconnected from the drivetrain and the vehicle continues to roll.
- The  symbol appears in the instrument display.

Glide mode will be activated if the following conditions are met:

- The ECO start/stop function is switched on.
- Drive program  is selected with the drive setting "Moderate".
- The speed is within a suitable range.
- The road's course is suitable, e.g. no steep uphill or downhill gradients or tight bends.
- You are no longer depressing the accelerator or brake pedal.

Glide mode will be deactivated again if one of the conditions is no longer met.

Driving and driving safety systems

Function of ESP® (Mercedes-AMG vehicles)

You can select between the following modes of the Electronic Stability Program (ESP®):

- ESP® ON
- ESP® SPORT
- ESP® OFF

Characteristics when ESP® is activated

ESP® monitors and improves driving stability and traction, particularly in the following situations:

- When you are pulling away on wet or slippery roads
- When you are braking.
- **Vehicles with trailer hitch:** in trailer operation from speeds of 40 mph (65 km/h), if the vehicle/trailer combination begins to sway from side to side.
- When there is a strong crosswind from approximately 47 mph (75 km/h) to 125 mph (200 km/h).

ESP® can stabilize the vehicle by intervening in the following ways:

- The brakes are applied to one or more specific wheels.
- The engine output is adapted according to the situation.

ESP® is activated every time the vehicle is started regardless of whether ESP® was in ESP® SPORT or deactivated before the vehicle was switched off.

When the  ESP® warning lamp flashes, one or several wheels has reached its grip limit:



- Adapt your driving style to suit the prevailing road and weather conditions.
- Do not deactivate ESP® under any circumstances.
- Depress the accelerator pedal only as far as necessary.

Characteristics of ESP® SPORT

⚠ WARNING Risk of skidding if ESP® SPORT is used incorrectly


When you activate ESP® SPORT, there is an increased risk of skidding and having an accident.

▶ Activate ESP® SPORT only in the circumstances described below.

When ESP® SPORT is selected, the  and  warning lamps will light up continuously.

Select ESP® SPORT when the vehicle's own oversteer and understeer characteristics are desired, e.g. on cordoned-off roads.

Driving with ESP® SPORT or with ESP® deactivated requires an extremely skilled and experienced driver.

If ESP® SPORT is activated and one or more wheels start to spin, the  ESP® warning lamp will flash. ESP® will then stabilize the vehicle only to a limited degree.

ESP® SPORT also has the following characteristics:



- ESP® improves driving stability only to a limited degree.
- ETS/4ETS traction control is still active.
- The engine's torque is restricted only to a limited degree and the drive wheels can spin. The spinning of the wheels improves traction on loose surfaces.
- ESP® continues to provide assistance when the brakes are firmly applied.
- **Vehicles with trailer hitch:** stabilization of the vehicle/trailer combination is no longer active.
- Crosswind Assist is no longer active.

Characteristics when ESP® is deactivated

⚠ WARNING Risk of skidding if ESP® is deactivated

If you deactivate ESP®, ESP® cannot carry out vehicle stabilization.

▶ ESP® should only be deactivated in the following situations.

When ESP® is deactivated, the  and  warning lamps will light up continuously.

Deactivating ESP® has the following effects:


- Driving stability will no longer be improved.
 - The drive wheels could spin.
 - ETS/4ETS traction control is still active.
 - **Vehicles with trailer hitch:** stabilization of the vehicle/trailer combination is no longer active.
 - Crosswind Assist is no longer active.
- i** Even when ESP® is deactivated, you will still be assisted by ESP® when braking hard.

It may be best to activate ESP® SPORT or deactivate ESP® in the following situations:

- When using snow chains.
- In deep snow.
- On sand or gravel.

14 Driving and parking

- ❶ Spinning the wheels improves traction.
- ❷ Activate ESP® as soon as the situations described above no longer apply. ESP® will otherwise not be able to stabilize the vehicle if the vehicle starts to skid or a wheel starts to spin.

If the  ESP® warning lamp lights up continuously, ESP® is not available due to a malfunction.

Observe the display messages, warning lamps and indicator lamps shown.

- Indicator and warning lamps
- Display messages

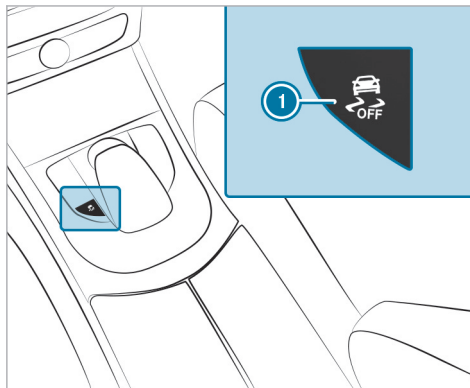
ETS/4ETS (Electronic Traction System)

ETS/4ETS traction control is part of ESP®.

ETS/4ETS can improve the vehicle's traction by intervening in the following ways:

- The drive wheels are braked individually if they spin.
- More drive torque is transferred to the wheel or wheels with traction.

Adjusting ESP® (Mercedes-AMG vehicles)



▶ **To activate ESP® SPORT:** briefly press button ❶.

The  and  warning lamps appear in the Instrument Display.

▶ **To deactivate ESP®:** press and hold button ❶

until the  and  warning lamps appear on the instrument display.

▶ **To activate ESP®:** briefly press button ❶.

The ,  and  warning lamps go out.

Observe the information on warning lamps and display messages which are shown in the Instrument Display.

AMG adaptive sport suspension system

Function of AMG RIDE CONTROL

AMG RIDE CONTROL is a variable adjustable damping for improved driving characteristics and ensures the best possible suspension, even with a laden vehicle. The damping is adjusted depending on the drive program selected and can also be adjusted manually.

The damping is set individually for each wheel and is affected by the following factors:

- driving style, e.g. sporty
- road condition, e.g. bumps
- the damper setting or drive program selected

AMG RIDE CONTROL comprises the following components:

- steel suspension
- three damper settings: **COMFORT**, **SPORT** and **SPORT+**
- adaptive damping system with constant damping force adjustment
- DYNAMIC SELECT switch
- suspension setting button

Suspension settings of the drive programs

Drive programs  and :

- The suspension and steering settings are comfortable.

Drive programs  and :

- The suspension and steering settings are firmer and optimized for sporty driving.

Drive program :

- The suspension and steering settings are individually adapted.

Drive program :

- The suspension and steering settings are firmer and optimized for driving on sand.

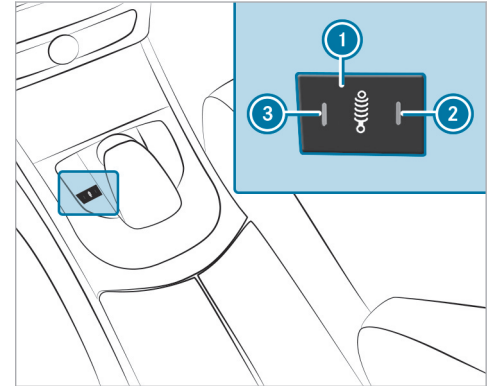
Drive program :




- The suspension and steering settings are comfortable and optimized for driving on unpaved roads and loose ground.

Drive program :

- The suspension is firmer and the steering settings are comfortable.
- The suspension and steering settings are optimized for driving in difficult terrain and on hard, rocky ground.

AMG RIDE CONTROL, selecting the suspension setting



- ▶ **COMFORT damper setting:** press button  repeatedly until indicator lamps  and  go out. The **AMG Suspension System COMFORT** message will appear on the Instrument Display.

The driving characteristics of your vehicle are comfortable.

- ▶ **SPORT damper setting:** press button ❶ repeatedly until indicator lamp ❸ lights up. The **AMG Suspension System SPORT** message will appear on the Instrument Display.

The suspension is adapted to be firmer.

- ▶ **SPORT+ damper setting:** press button ❶ repeatedly until indicator lamps ❷ and ❸ light up. The **AMG Suspension System SPORT +** message will appear on the Instrument Display. The suspension is adapted to be very firm.



Sand



Trail



Rock

If you drive faster than 20 mph (35 km/h), the 360° camera view will be closed.

For more information on the "Function of the 360° camera", please refer to your vehicle Operator's Manual.

Information on the off-road driving programs can be found in the chapter "Function of the DYNAMIC SELECT switch" in your supplementary Mercedes-AMG Operator's Manual.




Function of the 360° Camera


- ❶ The following note does not apply to all country versions.



Contrary to the information in your vehicle Operator's Manual, the views of the 360° camera are displayed up to a speed of approx. 20 mph (35 km/h) when driving forward in the off-road driving program:

Notes on the instrument display and on-board computer

Additional notes regarding your Mercedes-AMG vehicle:

- If one of the following drive programs has been selected, the engine electronics switches from 8-cylinder mode to 4-cylinder mode if necessary:
 -  (Slippery)
 -  (Comfort)
 -  (Individual) – with the "Moderate" or "Reduced" drive setting

The instrument display will show the  symbol in the status area.

- Indicator and warning lamps:** the vehicle is also equipped with  ESP[®] OFF and  warning lamps (→ page 28).
- You can select the following display content:
 - Tachometer (classic display setting)
 - Date (progressive display setting)
 - Gear display

- Warm-up
- G-meter
- Engine data
- Trip computer
- Navigation

Calling up displays in the Performance menu

On-board computer:

 Performance

 **To select a display:** swipe upwards or downwards on the left-hand Touch Control.

Displays in the **Performance** menu:

- Warm-up
- SETUP
- G-meter
- RACE TIMER
- Engine data



Warm-up (example)

- Digital speedometer
- Gear display
- Engine oil temperature
- Transmission oil temperature
- Boost pressure

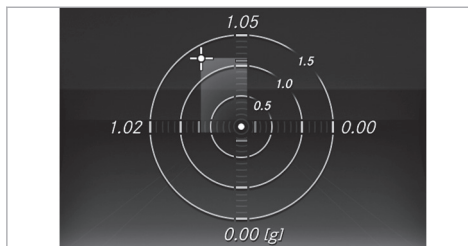
If the engine or transmission is not at normal operating temperature, the instrument display will

show temperature ③ or ④ in blue. Avoid using the full engine power output during this time.



SETUP (example)

- ① Drive system setting:
Reduced/Moderate/Sport/Dynamic/Race
- ② AMG Performance exhaust system:
Balanced/Powerful
- ③ ESP® status:
On/Off/SPORT
- ④ Transmission position:
D/M
- ⑤ Suspension tuning:
COMFORT/SPORT/SPORT+

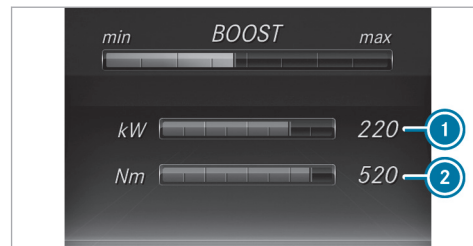


G-meter (example)

While the vehicle is in motion, the G-meter shows the forces that are exerted on the vehicle occupants both laterally and in the direction of travel. The maximum values appear in red in the coordinate system.

- ▶ **To reset the G-meter:** press the left-hand Touch Control.
- ▶ Select **Yes**.
- ▶ Press the left-hand Touch Control.

If you press and hold the left-hand Touch Control, the function will be reset immediately.



Engine data (example)

- ① Current power output
- ② Current torque

Displaying and starting RACETIMER on the Performance menu

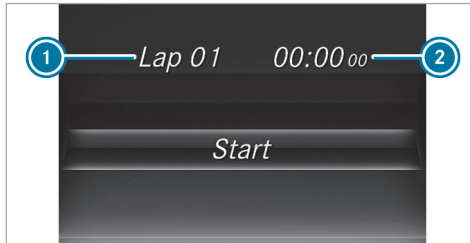
On-board computer:

➔ Performance

The following functions are possible in RACE-TIMER:

- Selecting displays and starting
- Stopping

- Starting a new lap
- Displaying lap statistics
- Resetting

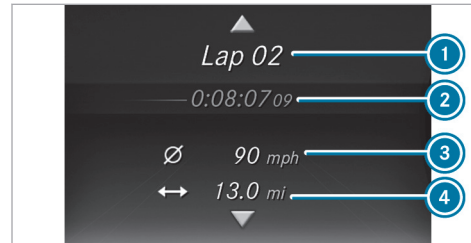


- ① Lap
- ② Lap time

RACE TIMER is intended only for use on designated race tracks. Do not use the function on public roads.

- ▶ **To select a display and start:** swipe upwards or downwards on the left-hand Touch Control.
- ▶ Press the left-hand Touch Control.

- ▶ Select **Start** and press the left-hand Touch Control.
- ▶ **To stop:** select **Stop** and press the left-hand Touch Control.
- ▶ **To start a new lap:** after the first stored lap, press the left-hand Touch Control.
- ▶ Select **New Lap** .
A maximum of 32 laps may be stored.



Example: RACETIMER

- ① Lap
- ② Elapsed time
- ③ Average speed
- ④ Distance covered

- ▶ **To display the lap statistics:** after at least two stored laps, press the left-hand Touch Control.
- ▶ Select **Lap List** .
The lap statistics will be displayed.
- ▶ Display the statistics for the next lap by swiping upwards or downwards on the left-hand Touch Control.
The fastest lap will be indicated by flashing text ① .
- ▶ **To reset:** Stop RACETIMER and press the left-hand Touch Control.
- ▶ Select **Reset** and press the left-hand Touch Control.
All laps will be deleted.

Notes on the care of tailpipes

⚠ WARNING Risk of burns from the tailpipe and tailpipe trims

The exhaust tailpipe and tailpipe trims can become very hot. If you come into contact with these parts of the vehicle, you could burn yourself.

- ▶ Always be particularly careful around the tailpipe and the tailpipe trims and supervise children especially closely in this area.
- ▶ Allow vehicle parts to cool down before touching them.

Observe the following notes in order to prevent damage to the vehicle:

- Clean the tailpipes with a cleaning agent recommended for Mercedes-Benz, especially in the winter and after washing the vehicle.
- Do not use acidic cleaning agents.

Changing a wheel

- ▶ Be sure to also observe the notes on changing a wheel in the Operator's Manual of your vehicle.

Vehicles with AMG Driver's Package:

⚠ WARNING Risk of accident caused by non-approved tire types

If you use tire types that have not been adapted to changes made to the factory speed limit, this can have the following consequences:

- The tires are not suitable for high speeds and the corresponding driving dynamics.
- The tires wear unevenly and affect the roadworthiness of the vehicle.
- ABS, ESP® and cruise control operation are restricted.

This can jeopardize road safety.

- ▶ Only use tire types that have been approved for the maximum permissible speed set and the vehicle.

Operating fluids

Fuel

Information on fuel quality for Mercedes-AMG vehicles

Observe the information on operating fluids in the vehicle Operator's Manual.

! NOTE Damage caused by the wrong fuel

Even small amounts of the wrong fuel could result in damage to the fuel system, the engine and the emission control system.

- ▶ Only refuel with low-sulfur spark-ignition engine fuel.

This fuel may contain up to 10% ethanol by volume. Your vehicle is suitable for use with E10 fuel.

Never refuel with one of the following fuels:

- diesel
- Gasoline with more than 10% ethanol by volume, e.g. E15, E85, E100

- Gasoline with more than 3% methanol by volume, e.g. M15, M30, M85, M100
- Gasoline with additives containing metal

If you have accidentally refueled with the wrong fuel:

- ▶ Do not switch on the vehicle.
- ▶ Consult a qualified specialist workshop.

If the available fuel is not sufficiently low in sulfur, it may produce unpleasant odors.

Refuel using only premium-grade unleaded gasoline of at least 91 AKI/95 RON.

As a temporary measure, if the recommended fuel is not available, you may also use regular unleaded gasoline. When doing this, note the octane number on the vehicle on the information label on the fuel filler flap (see the vehicle Operator's Manual). Filling up with regular unleaded gasoline can reduce engine output and increase fuel consumption.

Never refuel using gasoline of an even lower RON.

! NOTE Premature engine wear through unleaded regular gasoline

Impairment of the longevity and performance of the engine.

If unleaded premium grade gasoline is unavailable and you have to refuel using unleaded regular gasoline:

- ▶ Only fill the fuel tank to half full with unleaded regular gasoline and refill as soon as possible with unleaded premium grade gasoline.
- ▶ Do not drive at the maximum design speed.
- ▶ Avoid sudden acceleration and engine speeds over 3000 rpm.

Further information on fuel is available at the following locations:

- At a gas station
- At a qualified specialist workshop
- **USA only:** on the <https://www.mbusa.com>

Tank content and fuel reserve (Mercedes-AMG vehicles)

Fuel tank filling capacity

Model	Total capacity
Mercedes-AMG G 63	26.4 gal (100.0 liters)

Fuel tank reserve

Model	Fuel reserve
Mercedes-AMG G 63	3.2 gal (12.0 liters)

Engine oil quality and filling capacity (Mercedes-AMG vehicles)

Engine oil specification

Model	MB-Freigabe or MB-Approval
Mercedes-AMG G 63	229.5 ¹⁾ , 229.51

1) Recommended for the lowest possible fuel consumption (lowest SAE viscosity class in each case; observe possible restrictions of the approved SAE viscosity classes)

Only use SAE 0W-40 or SAE 5W-40 viscosity class engine oils.

To achieve the lowest possible fuel consumption, it is recommended to use the engine oil specifications marked in the table with the lowest SAE viscosity class. While doing so, observe possible restrictions of the approved SAE viscosity classes.

Engine oil filling capacity

Model	Capacity
Mercedes-AMG G 63	10.0 US qt (9.5 liters)

The specified filling capacity refers to an oil change with the oil filter.

Coolant filling capacity (Mercedes-AMG vehicles)

Coolant (engine)

Model	Capacity
Mercedes-AMG G 63	14.5 US qt (13.7 l)

Refrigerant filling capacity (Mercedes-AMG vehicles)

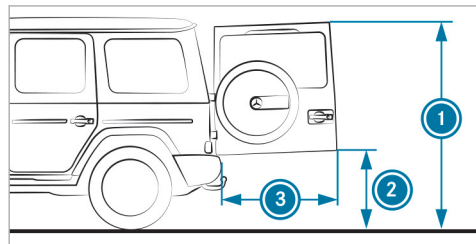
Filling capacity for refrigerant and PAG oil

Model	Refrigerant
Mercedes-AMG G 63	24.2 ± 0.4 oz (685 ± 10 g)
Model	PAG oil
Mercedes-AMG G 63	2.8 ± 0.4 oz (80 ± 10 g)

Vehicle data**Vehicle dimensions (Mercedes-AMG vehicles)**

The heights and lengths specified may vary as a result of the following factors:

- Tires
- Load
- Condition of the suspension
- Optional equipment

**Range of movement****Mercedes-AMG G 63**

① Distance to top edge	76.1 in (1934 mm)
② Distance to lower edge	29.1 in (740 mm)
③ Range of movement	43.8 in (1088 mm)

Vehicle dimensions**Mercedes-AMG G 63**

Vehicle length	191.8 in (4873 mm)
Vehicle width including exterior mirrors	86.1 in (2187 mm)
Vehicle height	77.4 in (1966 mm)
Wheelbase	113.8 in (2890 mm)

Mercedes-AMG G 63

Turning circle	44.3 ft (13.5 m)
Minimum ground clearance	9.3 in (238 mm)

Weights and loads (Mercedes-AMG vehicles)

Bear in mind that items of optional equipment increase the curb weight and reduce the payload. Vehicle-specific weight information can be found on the vehicle identification plate.

Vehicle data for off-road driving (Mercedes-AMG vehicles)

Fording

! **NOTE** Damage caused by water when fording

Water can enter the engine compartment and vehicle interior in the following cases:

- The maximum permissible fording depth is exceeded when traveling through standing water.
 - A bow wave forms during fording.
 - Water accumulates when fording.
- ▶ Do not exceed the maximum permissible fording depth.
- ▶ Drive slowly through water.
- ▶ When driving through flowing water, be aware that the permissible fording depth is lower due to the accumulation of water.

The specified value indicates the maximum permissible fording depth for vehicles that are ready to drive. It applies to slow driving through standing water.

Driving through flowing water reduces tire traction. The permissible fording depth is then correspondingly lower.

Observe the notes on off-road driving and fording in the vehicle Operator's Manual.



Model	1 Fording depth
Mercedes-AMG G 63	27.5 in (700 mm)

Angle of approach/departure

The specified values are maximum values for vehicles that are in ready-to-drive loading condition.

Observe the notes on driving in mountainous terrain in the vehicle Operator's Manual.



Model	1 Angle of approach	2 Angle of departure
Mercedes-AMG G 63	27°	29.6°

Maximum gradient climbing ability

The vehicle's gradient climbing ability depends on the weight distribution in the vehicle, the terrain conditions and the road surface conditions.

The specified value applies under the following conditions:

- the vehicle is ready to drive
- the **LOW RANGE** off-road gear of the transfer case is engaged
- the road surface conditions and thus the traction are good

A gradient climbing ability of 100% corresponds to an incline of 45°.

Observe the notes on driving in mountainous terrain in the vehicle Operator's Manual.

Model	Maximum gradient climbing ability
Mercedes-AMG G 63	100 %

Maximum permissible speed (Mercedes-AMG vehicles)

In practice, the maximum permissible speeds may differ from the values specified. They depend on the operating conditions, optional equipment and tire size.

The following values only apply to vehicles with the AMG Driver's Package.

Maximum speeds

Gear	Mercedes-AMG G 63
1st gear	33 mph (53 km/h)
2nd gear	55 mph (89 km/h)
3rd gear	79 mph (128 km/h)
4th gear	110 mph (177 km/h)
5th gear	148 mph (238 km/h)
6th gear	149 mph (240 km/h)
7th gear	149 mph (240 km/h)

Trailer hitch**General information on the trailer hitch (Mercedes-AMG vehicles)**

The retrofitting of a trailer hitch is permissible only if a towing capacity is specified in your vehicle documents.

Further information can be obtained at a qualified specialist workshop.

Permissible trailer load (Mercedes-AMG vehicles)

The drawbar load is not included in the towing capacity.

Permissible towing capacity, braked (at a minimum start-off gradeability of 8%)

Model	Towing capacity, braked
Mercedes-AMG G 63	6503 lbs (2950 kg)

Permissible towing capacity, braked (at a minimum start-off gradeability of 12%)

Model	Towing capacity, braked
Mercedes-AMG G 63	6503 lbs (2950 kg)

Maximum tongue weight (Mercedes-AMG vehicles)

! **NOTE** Damage caused by the trailer coming loose

If the tongue weight used is too low, the trailer may come loose.

- ▶ The tongue weight must not be below 110.2 lbs (50 kg).
- ▶ Use a tongue weight that is as close as possible to the maximum permissible tongue weight.

Trailer drawbar load

Model	Maximum drawbar load
Mercedes-AMG G 63	520.3 lbs (236 kg)

The actual tongue weight may not be higher than the specified value. The value can be found on the vehicle identification plates of the trailer hitch or of the trailer. The lowest weight applies.

The permissible drawbar tongue weight is the maximum weight with which the drawbar may be loaded. The permissible drawbar tongue weight is the limit for trailer hitches approved by Mercedes-Benz.


Permissible axle load, rear axle (Mercedes-AMG vehicles when a trailer is being towed)

Axle load

Model	Axle load
Mercedes-AMG G 63	4189 lbs (1900 kg)


Display messages



Driving and driving safety systems

Display messages	Possible causes/consequences and ► Solutions
 <p>Malfunction Drive at Max. 50 mph</p>	<ul style="list-style-type: none">* AMG RIDE CONTROL is malfunctioning. The vehicle's handling characteristics may be affected.<ul style="list-style-type: none">► No faster than 50 mph (80 km/h).► Consult a qualified specialist workshop.

Warning and indicator lamps

Driving and driving safety systems

Warning/indicator lamp	Possible causes/consequences and ► Solutions
 <p>Suspension warning lamp (yellow)</p>	<ul style="list-style-type: none">* The yellow AMG adaptive sport suspension system warning lamp is lit. There is a malfunction in the AMG adaptive sport suspension system.<ul style="list-style-type: none">► Note the messages on the instrument display.

Warning/indicator lamp	Possible causes/consequences and ► Solutions
	<p>* The yellow ESP[®] OFF warning lamps are lit while the vehicle is running. ESP[®] is deactivated.</p> <p>Other driving systems and driving safety systems may also be inoperative.</p> <p>▲ WARNING Risk of skidding when driving with ESP[®] deactivated</p> <p>ESP[®] does not act to stabilize the vehicle. The availability of further driving safety systems is also limited.</p> <ul style="list-style-type: none"> ▶ Drive on carefully. ▶ Deactivate ESP[®] only for as long as the situation requires. <p>If ESP[®] cannot be activated, ESP[®] is malfunctioning.</p> <ul style="list-style-type: none"> ▶ Have ESP[®] checked immediately at a qualified specialist workshop. <p>► Observe the notes on deactivating ESP[®] (→ page 12).</p>
	<p>* ESP[®] SPORT is activated while the vehicle is running. When ESP[®] SPORT is activated, ESP[®] will stabilize the vehicle only to a limited extent.</p> <p>▲ WARNING Risk of skidding if ESP[®] SPORT is used incorrectly</p> <p>When you activate ESP[®] SPORT, there is an increased risk of skidding and having an accident.</p> <ul style="list-style-type: none"> ▶ Activate ESP[®] SPORT only in the circumstances described below.

30 Display messages and warning/indicator lamps

Warning/indicator lamp	Possible causes/consequences and ▶ Solutions
	<ul style="list-style-type: none"><li data-bbox="476 249 1086 276">▶ Observe the notes on activating ESP® SPORT(→ page 12).

1, 2, 3 ...

- 360° Camera**
Function..... 16

A

- AMG**
Menu (on-board computer)..... 17

- AMG adaptive sport suspension system,**
Comfort mode, Sport Plus suspension
setting, Sport suspension setting
Selecting the suspension setting..... 15
Suspension..... 14

- AMG high performance brake system**..... 9

- AMG performance exhaust system**
Function..... 8
Operating..... 9

- AMG steering-wheel buttons**
Function..... 8

- Angle of approach/departure**..... 25

- Automatic transmission**
Drive programs..... 9
DYNAMIC SELECT switch..... 9
Manual gear shifting..... 11

- Oil temperature (on-board computer,
Performance menu)..... 17
Steering wheel paddle shifters..... 11

- Axle load**
Towing a trailer..... 27

B

- Bicycle rack**
Load capacity..... 27

- Boost pressure (on-board computer, Per-
formance menu)**..... 17

- Brakes**
AMG high performance brake system..... 9

C

- Camera**
360° Camera..... 16

- Care**
Tailpipes..... 20

- Changing a wheel**
Mounting a new wheel..... 21
Removing a wheel..... 21

- Climate control**
Filling capacity for refrigerant and
PAG oil..... 23

- Cockpit**
Instrument panel..... 4

- Coolant**
Capacity..... 23

D

- DIRECT SELECT lever**
Manual gearshifting..... 11

- Display messages**
 **Malfunction Drive at Max. 50**
mph..... 28

- Drive programs**..... 9

- Driving safety system**
ESP® (Electronic Stability Program)..... 12

- Driving tips**
AMG high performance brake system..... 9

- DYNAMIC SELECT**
Configuring drive program I..... 10
Drive programs..... 9

- Function..... 9
- E**
- E10**..... 22
- Electronic Stability Program**..... 12
- Engine oil**
- Capacity..... 23
 - MB-Freigabe / MB-Approval..... 23
 - Quality..... 23
 - Temperature (on-board computer, Performance menu)..... 17
- ESP®**
- Activating/deactivating (button)..... 14
 - ESP® SPORT..... 12
 - Function..... 12
- ESP® (Electronic Stability Program)**
- Status display (on-board computer, Performance menu)..... 17
- Exhaust system**..... 8
- F**
- Fording water**..... 25
- Fuel**
- E10..... 22
 - Flexible fuel vehicles..... 22
 - Gasoline..... 22
 - Gasoline quality..... 22
 - Reserve..... 23
 - Sulfur content..... 22
 - Tank capacity..... 23
- Fuel reserve**..... 23
- G**
- G-Meter (on-board computer, Performance menu)**..... 17
- Gasoline**..... 22
- Gear display (on-board computer, Performance menu)**..... 17
- Gearshift**
- Manual..... 11
- Glide mode**..... 11
- I**
- Individual drive program**
- Configuring..... 10
- Instrument display**
- AMG displays..... 17
 - Performance menu..... 17
- Instrument panel**
- Cockpit..... 4
- L**
- Load capacity**
- Bicycle rack..... 27
- M**
- Maximum permissible speed (Mercedes-AMG vehicles)**..... 26
- Menu (on-board computer)**
- AMG displays..... 17
 - Performance..... 17
- Multimedia system**
- Configuring drive program I..... 10
- O**
- Off-road driving**..... 25
- On-board computer**
- AMG menu..... 17

Performance menu.....	17
Operating fluids	
Gasoline.....	22
Operator's manual	7
P	
Paddle shifters	
Steering wheel paddle shifters.....	11
Performance (on-board computer, Performance menu)	17
Power output (on-board computer, Performance menu)	17
Programs	9
R	
RACETIMER (Performance menu)	18
Racetrack mode	
AMG steering-wheel buttons.....	8
Rear-end door	
Opening dimensions.....	24
Reserve	
Fuel.....	23

S

Selecting a gear	11
SETUP (on-board computer, Performance menu)	17
Shifting	
Automatic transmission.....	11
Manual.....	11
Steering wheel paddle shifters.....	11
Sports exhaust	9
Steering wheel paddle shifters	11
Sulfur content	22
Suspension	
AMG adaptive sport suspension system...	14
Selecting the suspension setting.....	15

T

Tailpipes	
Care.....	20
Tank capacity	
Fuel.....	23
Reserve.....	23

Technical data

Axle load (trailer operation).....	27
Maximum permissible speed Maximum permissible speed (Mercedes-AMG vehicles).....	26
Tongue weight.....	27
Towing capacity.....	26
Temperature	
Engine oil (on-board computer, Performance menu).....	17
Transmission oil (on-board computer, Performance menu).....	17
Tires	
Mounting.....	21
Removing.....	21
Tongue weight	27
Torque (on-board computer, Performance menu)	17
Towing a trailer	
Axle load.....	27
Trailer hitch	
Axle load.....	27
General notes.....	26
Tongue weight.....	27

Towing capacity..... 26

V**Vehicle**

Equipment..... 7

Vehicle data

Angle of approach/departure..... 25

Fording water..... 25

Maximum permissible speed
(Mercedes-AMG vehicles)..... 26

Minimum ground clearance..... 24

Turning circle..... 24

Vehicle height..... 24

Vehicle length..... 24

Vehicle width..... 24

Weights..... 24

Wheelbase..... 24

Vehicle dimensions..... 24

Vehicle equipment..... 7

W

Warm-up (on-board computer, Performance menu)..... 17

Warning/indicator lamp

 Suspension warning lamp (yellow).. 28

Wheels

Mounting..... 21

Removing..... 21



